

**Morris School
Return to School Plan
September 2020**



Questions? Call the School (204.746.2612)

Introduction

The following is our school reopening plan based on the Government of Manitoba's announcement for September 2020 and the Red River Valley School Division Plan for Reopening document. The division's reopening document can be found [here](#). Our staff have been busy working to make appropriate plans to allow the safe return of students in response to this next phase. The Chief Provincial Public Health Officer and School Division have provided direction and guidelines to have students return safely to school. We want to assure everyone that Morris School is making plans based upon the recommendations from Manitoba Health and the School Division. Our school staff are planning for the return of students to the school with the priority remaining the safety and well-being of staff and students. We appreciate the patience, co-operation and support that families have provided as we navigate these changing conditions. As one of my colleagues put it, we are building a plan on shifting sands. We know things may change, but this is the plan as of September 3, 2020 at 4:00 pm

Return

Morris School students from Grades 1-10 will be returning to school starting Tuesday, September 8th. Kindergarten as well as Grades 11 and 12 students will begin on Wednesday, September 9th. Grades 1-8 students will attend every school day. Kindergarten and Grades 9 - 12 students will attend every other school day. Please refer to Appendix A to see a calendar that indicates the appropriate school day for the aforementioned grade levels.

Symptom and Exposure Screening

Staff are self-monitoring daily for signs and symptoms of COVID-19. Staff who have any symptoms of COVID-19 will stay home and follow the steps recommended by Manitoba Health.

Parents and caregivers must monitor their child daily for symptoms and exposures before sending them to school. Parents and caregivers are responsible for ensuring their children are not displaying symptoms before sending them to school or on the bus.

A student or staff member who meets any of the exclusion criteria will not be admitted to the school and will be advised to immediately isolate and consult Health Links or their health-care provider. Those with symptoms should be tested. If the test is negative for COVID19, they can return 24 hours after symptoms resolve. If individuals do not get tested, they should be isolated for 14 days from symptom onset, and they may return if symptoms have resolved at that time.

A chronic stable cough, sneeze, runny nose or nasal congestion that is unchanged and linked to a known medical condition such as asthma or allergies, is not an absolute requirement for exclusion. As well, children who are crying can exhibit a runny nose. Changing or worsening of chronic symptoms require isolation and contacting Health Links. Parents/Caregivers and Staff should exercise judgment based on the symptoms, but when in doubt, err on the side of caution and contact Health Links or their healthcare provider.

Parents and staff will focus on monitoring for symptoms of COVID-19, as outlined in the Screening Tool and poster at <https://sharedhealthmb.ca/covid19/screening-tool>.

Visitor Access

Community use of schools is suspended at this time. This is a division wide policy.

Visitor access will be limited and managed through the school office. All doors at the school will be locked during the school day. Visitors should call the office (204.746.2612) prior to requiring entry into the school.

COVID-19 Orientation

All staff will be provided with the following orientation before the return of students to the classroom. As well all visitors to the building will be screened and will need to watch the orientation prior to entry in the building Link: COVID Orientation Powerpoint

Increased Cleaning and Disinfecting

Increased frequency of cleaning, disinfecting and sanitizing - particularly on high-touch surfaces and in common/shared areas - is being implemented school-wide.

- Commonly touched surfaces (e.g., doorknobs, light switches, electronic devices, chairs, desks, art supplies, toys, games, gym equipment, tools and equipment) will be disinfected frequently - at least twice daily, or more often as needed.
- Monitoring of hand-cleaning supplies will ensure an ample supply at all sinks in washroom and kitchen areas.
- Washrooms will be cleaned and disinfected frequently (at least twice daily, and more often as needed) and will be used by one student at a time.
- Water fountains that are not touchless or cannot be cleaned between users are being turned off. Students and staff should bring reusable water bottles daily. To limit lines at our existing water fountains, we would encourage water bottles to be filled at home at the beginning of each school day. We encourage proper care of water bottles. Some advice on care can be found at <https://cutt.ly/rfzj2Sj>.

Health Canada has posted a list of disinfectants shown to be effective against COVID-19 at <https://cutt.ly/rfzkzld>.

Ventilation

The following is a message from our division's Maintenance Department regarding our schools' ventilation systems.

The Red River Valley School Division considers the safety of its staff and students as paramount. To this end, we are taking the following steps around ventilation of our buildings:

1. We are gathering quotes and will be undertaking air quality samples.
2. We are gathering quotes and expect to perform air duct cleaning in any buildings that have not had recent cleaning.

3. We will be turning the 'outside air dampers' on our ventilation systems up, to bring more fresh air into the buildings.
4. We will be increasing the air movement in our buildings. This, in conjunction with point 3, will mean we exchange the air in the buildings frequently. This will help ensure a safe air environment.
5. We will perform increased changing/cleaning of our filtration systems, again to ensure the best quality air we can provide.
6. We are purchasing 'dry fog' systems for our buildings, which will enable us to fog spaces with disinfectant, again increasing the hygiene and air quality.

We will continually monitor our efforts, and will make any necessary changes as required.

Hand washing/Sanitizing

Hand washing with soap and water for at least 20 seconds is the recommended hand hygiene practice. Staff and students will engage in frequent hand washing or sanitizing, including at the following times:

- the start of the day and before going home
- before and after recess
- after going to the washroom and helping children with washroom routines
- after a diaper change (both children and staff)
- before and after preparing food
- before eating or drinking
- after getting hands dirty
- after wiping a nose or handling dirty tissues
- after coughing, sneezing or blowing nose
- after soothing a crying child
- before and after putting on and taking off a mask
- before and after being on a bus
- after cleaning tasks

School staff will help young children to ensure hand washing is done correctly.

Hand sanitizer stations are set up and available at all building access points and throughout the facility.

Respiratory etiquette will be modelled, taught and reinforced regularly. This includes coughing and sneezing into a tissue or sleeve, as well as properly and promptly disposing of any used tissues, and exercising proper hand hygiene.

Signage is posted, highly visible, and includes visual cues that remind staff and children to perform hand hygiene. (e.g., sneezing or coughing into their elbow, putting used tissues in a waste receptacle, and washing hands or using hand sanitizer immediately after using tissues).

Masks

All staff are required to wear masks.

As per the Provincial Government mandate, all students in grades 4-12 are required to wear masks in the school. We would strongly encourage each student to have 2 to 3 reusable non-medical masks in their possession. Reusable non-medical masks should be washed between uses. Tips for caring for your non-medical mask can be found [here](#). If a student does not have/forgets a mask, the school will provide that student with a single use mask for the day.

Since Morris School has multi-age grade 3/4 classrooms, as per provincial recommendations, Grade 3 students should wear a mask.

Grades K-2 are also encouraged to wear masks.

Non-medical masks should not be worn by anyone who:

- is unable to remove the mask without assistance (e.g., due to age, ability or developmental status)
- has breathing difficulties
- is under two years of age

Physical Distancing and Cohorts

For the most part, Morris School is unable to meet the 2-metre social distancing recommendation due to limited space in classrooms. We are adopting the 1-metre minimum distancing with cohorts of students recommendation. Students will remain in one classroom, and a 1-metre distance will be instituted in the classroom configuration. Each Cohort will be assigned a bathroom for their use.

Each Cohort will have their own recess time scheduled or section of the school grounds. Each Cohort will have its own entrance and exit from the school building.

Hallway movement will be limited. Wall and floor signage will help students and staff maintain a 2-metre distance in hallways. We will do our best to reduce the amount of traffic senior year students experience. Senior Years teachers will change rooms to teach a group more than students will move to a new classroom.

The following classroom configurations are being implemented to ensure smaller class size to allow for the 1-metre social distancing minimum.

Morris School is planning for ten (10) cohorts. A map of the school with the respective pooling locations and entrance/exit doors labeled can be found in Appendix C at the end of this document:

Cohort 1

- Kindergarten to Grade 2 (4 classrooms total)
- This cohort will enter the building at 8:35 am and be dismissed at 3:10 pm.
- Students will gather to meet in an area that includes the Early Years play structure and swings in the east end of the school. They will be met and escorted into the school by a staff member.
- Grades 1/2 entrance & exit doors will be the east doors of the school, closest to the play structure.
- All four Grade 1/2 classrooms will be located in the far east end of the school

- Kindergartens will enter and exit through the exterior doors closest to their classroom.
- Breakfast Club will be served to students in their respective classrooms.

Cohort 2

- Grade 3/4 classes (4 classrooms total)
- This cohort will enter the building at 8:40 am and be dismissed at 3:15 pm.
- Students will gather to meet in an area between the Gaga-ball Pit and the soccer field. They will be met and escorted into the school by a staff member.
- Exit and entrance through the former Grade 5/6 door located on the north side of the school, facing Toronto Avenue (East of the main school entrance).
- Grade 3/4 classrooms will be located between their entrance/exit door and the front doors of the school.
- Breakfast Club will be served to students in their respective classrooms.

Cohort 3

- Grade 5/6 classes (3 classrooms total)
- This cohort will enter the building at 8:35 am and be dismissed at 3:10 pm.
- The students will be occupying classrooms in the former Grade 7/8 wing of the school.
- Students will gather to meet in the area between the vocational shop and the outdoor classroom on the south side of the school that faces Highway 23.
- This cohort's entrance and exit door will be the door between the vocational shops and the main school building.
- Breakfast Club will be served to students in their cohort area.

Cohort 4

- Grade 7/8 classes
- All Grade 7/8 classes will be held in the Senior Years Gym & Mezzanine.

- Due to the move to the Senior Years Gym, Grade 7s will remain together in one class and the Grade 8 students will split into two classes.
- Breakfast Club will be served to students in their cohort area.
- Exit and Entrance will be the gym doors at the back of school on the west side.

Cohort 5

- Grade 9 & 10 students
- This group will attend live classes every other day and then from home the following day. When at home, teachers will be available to their students who will be responsible for work on the days they are not at school.
- We ask that all Grade 9 & 10 students go directly to their first period class upon arrival. Those wanting to take advantage of the school's Breakfast Club program can go to the Senior Years Gym (east side) and follow the healthy & safety protocols put in place.
- Exit and Entrance bus loop doors closest to the Band room.

Cohort 6

- Grade 11 students
- This group will attend live classes every other day beginning Wednesday, September 9th and then from home the following day. When at home, teachers will be available to their students who will be responsible for work on the days they are not at school.
- We ask that all Grade 11 students go directly to their first period class upon arrival. Those wanting to take advantage of the school's Breakfast Club program can go to the Senior Years Gym (east side) and follow the healthy & safety protocols put in place.
- Exit and Entrance bus loop doors closest to the Band room.

Cohort 7

- Grade 12
- This group will attend live classes every other day beginning Wednesday, September 9th and then from home the following day. When at home, teachers will be available to their students who will be responsible for work on the days they are not at school.
- We ask that all Grade 12 students go directly to their first period class upon arrival. Those wanting to take advantage of the school's Breakfast Club program can go to the Senior Years Gym (east side) and follow the healthy & safety protocols put in place.
- Exit and Entrance bus loop doors closest to the Band room.

Cohort 8

- Access Students
- This cohort enter and exit the school via the south door of the Life Skills Room. Entry and exit times will vary depending on the student and their transportation plan.

Cohort 9

- Alternative Classroom
- The Alternative Classroom is not attached to the main school building. Alternative Students will enter and exit their classroom with the assistance of the Alternative Education teacher and support staff.

Cohort 10

- RRTVA Vocational Programming (Auto Body & Welding)
- The Vocational students will enter and exit their respective shops/classrooms via the doors on the west side of their respective vocational shop.

- Bus students will walk down the sidewalk parallel to Highway 23 (Montreal Avenue) until they reach the entry point to the parking lot adjacent to the vocational shop.
- The remainder of the procedures will be covered by the students' respective vocational instructors.

****Some Class lists will have to be adjusted when teachers return on September 2nd and will be shared with families no later than September 4th.****

Schedules are being distributed to students on the first day of classes.

Student Arrival and Departure Times

Bussed students' arrival and dismissal times will be determined by the bussing schedule. Non-bussed students are to arrive at school no more than 10 minutes prior to the start of their Grade's classes. They are to meet in their pooling locations (See Appendix C) and not mix with other cohorts. Students will be dismissed in a manner that will best keep the cohorts separated from one another. Breakfast Club will begin on Monday, September 14th for all students.

We would ask that when families drop their students off on Toronto avenue, that they make use of the circular turnaround at the end of the street. In order to use the turnaround at the end of the street, we need all people to stop their vehicles and drop their student(s) off prior to reach the east end of the school building. This will allow vehicles enough room to use the turnaround properly.

Closed Campus

The school division has decided to implement a closed campus system division-wide. All students will have one entrance onto the school campus and one exit each school day. As a result, if students leave school for whatever reason before their respective dismissal time, they will not be allowed to return to the school that day.

For example, if a student has a dentist appointment at 12:30 in Morris and is done at 1:30, they are not to return to school for the remainder of that school day. However, if the dentist appointment was at 9 am and the student went from home to the dentist appointment, they could attend school after the appointment because they had not been on school grounds yet that particular day.

For those families who have been accustomed to having their student(s) come home for lunch, they will no longer be allowed to do so due to the closed campus policy being implemented.

Recess

Recess will be separated by the cohorts or by field assignments when more than one cohort is outside at a time. Please see Appendix B for scheduled recess and lunch times

Lunch

A staggered lunch (Appendix B) has been established for a variety of the cohorts. K-8 students will be eat their lunches in their respective classrooms (as well as other locations) to ensure the cohorts are separated over the lunch outside period. Lunch recess will also be staggered to allow the playground to be used by only one cohort at a time.

Hallway Lockers

Hallway locker use is suspended division-wide. Supplies will need to be carried with students.

Band/Music

School Band and Choir programs are suspended in the school division. The Band program will not be run in school; however, band instruments and instrument instruction materials will be sent home with grade 9-12 students for practising and learning at home. Mrs. Zimmerman (nee Demond) will be running a virtual Senior Concert Band

and Senior Jazz Band program for students from grades 9-12. Students registered in these classes are expected to be engaged fully in their remote learning experience on the days when they are not at Morris School during the time allotted for these courses (ie. grade 11/12 students will be expected to attend band class at home on the grade 9/10 in-school days and vice versa). Senior Concert Band Students will be expected to join on to a Google Classroom where Google Meet and other information and assignments will be shared. Senior Years Band is from 11:15 - Noon; SY Jazz Band from Noon - 12:55 (days TBA) - (Mrs. Zimmerman will advise you on the schedule). All grades 9-12 band instruments will need to remain at home.

Grades K-5 music will still be scheduled, but some of the regular activities will be restricted due to COVID-19 protocols. Grade 6-8 Band will still meet but activities will also be restricted to adhere to Health & Safety protocols.

Physical Education/Health

Physical Education/Health classes will run outside as much as possible. We may also conduct Physical Education classes in classrooms or spaced appropriately in the Junior Gym (or a portion of the Senior Years gym). We ask families to ensure students have appropriate clothing and equipment for the weather. (Runners, shorts or sweatpants, short sleeve or long sleeve shirt, sunscreen, rain jacket.)

Inter-school Sports

The division has suspended inter-school sports for the time being. We will be working to see what sports we can organize as it pertains to training within a cohort. More information will follow as more information becomes available from a variety of sources (MB Public Health officials, Red River Valley School Division, Sport MB, MHSAA, Zone IV, etc.)

Morris School 2020/2021 Kindergarten Calendar

Day 1,3,5- Kindergarten

Sunday	Monday	Tuesday	Wednesday	Thursday	Friday	Saturday
		1	2 Administration Day No Classes Day 1	3 In School PD Day No Classes Day 2	4 In School PD Day No Classes Day 3	5
6	7 No Classes Labour Day	8 Day 4	9 Day 5	10 Day 6	11 Day 1	12
13	14 Day 2	15 Day 3	16 Day 4	17 Day 5	18 Day 6	19
20	21 Day 1	22 Day 2	23 Day 3	24 Day 4	25 Day 5	26
27	28 Day 6	29 Day 1	30 Day 2			

Sunday	Monday	Tuesday	Wednesday	Thursday	Friday	Saturday
				1 Day 3	2 Day 4	3
4	5 Day 5	6 Day 6	7 Day 1	8 Day 2	9 Day 3	10
11	12 No Classes Thanksgiving	13 Day 4	14 Day 5	15 Day 6	16 Day 1	17
18	19 Day 2	20 Day 3	21 Day 4	22 Day 5	23 MTS PD Day No Classes Day 6	24
25	26 Day 1	27 Day 2	28 Day 3	29 Day 4	30 Day 5	31

Sunday	Monday	Tuesday	Wednesday	Thursday	Friday	Saturday
1	2 Day 6	3 Day 1	4 Day 2	5 Day 3	6 School In-Service/ Admin Day - No Classes Day 4	7
8	9 Day 5	10 Day 6	11 No Classes Remembrance Day	12 Day 1	13 Day 2	14
15	16 Day 3	17 Day 4	18 Day 5	19 Day 6	20 School In-Service/ Admin Day - No Classes Day 1	21
22	23 Day 2	24 Day 3	25 Day 4	26 Day 5	27 Day 6	28
29	30 Day 1					

Sunday	Monday	Tuesday	Wednesday	Thursday	Friday	Saturday
		1 Day 2	2 Day 3	3 Day 4	4 Day 5	5
6	7 Day 6	8 Day 1	9 Day 2	10 Day 3	11 Day 4	12
13	14 Day 5	15 Day 6	16 Day 1	17 Day 2	18 Last Day of Classes Day 3	19
20	21 Winter Break	22 Winter Break	23 Winter Break	24 Winter Break	25 Winter Break	26
27	28 Winter Break	29 Winter Break	30 Winter Break	31 Winter Break		

Sunday	Monday	Tuesday	Wednesday	Thursday	Friday	Saturday
					1 Winter Break	2
3	4 Classes Resume Day 4	5 Day 5	6 Day 6	7 Day 1	8 Day 2	9
10	11 Day 3	12 Day 4	13 Day 5	14 Day 6	15 Day 1	16
17	18 Day 2	19 Day 3	20 Day 4	21 Day 5	22 Day 6	23
24	25 Day 1	26 Day 2	27 Day 3	28 Day 4	29 Day 5	29
30						

Sunday	Monday	Tuesday	Wednesday	Thursday	Friday	Saturday
	1 Day 6	2 Day 1	3 Day 2	4 Day 3	5 Day 4	6
7	8 Semester turn around/ Admin Day -No Classes Day 5	9 Day 6	10 Day 1	11 Day 2	12 Day 3	13
14	15 Louis Riel Day No Classes	16 Day 4	17 Day 5	18 Day 6	19 Day 1	20
21	22 Day 2	23 Day 3	24 Day 4	25 Day 5	26 Day 6	27
28						

Sunday	Monday	Tuesday	Wednesday	Thursday	Friday	Saturday
	1 Day 1	2 Day 2	3 Day 3	4 Day 4	5 Day 5	6
7	8 Day 6	9 Day 1	10 Day 2	11 Day 3	12 Day 4	13
14	15 Day 5	16 Day 6	17 Day 1	18 Day 2	19 School In-Service/ Admin Day - No Classes Day 3	20
23	24 Day 4	25 Day 5	24 Day 6	25 Day 1	26 Last Day of Classes Day 2	27
28	29 Spring Break	30 Spring Break	31 Spring Break			

Sunday	Monday	Tuesday	Wednesday	Thursday	Friday	Saturday
				1 Spring Break	2 Spring Break	3
4	5 Classes Resume Day 3	6 Day 4	7 Day 5	8 Day 6	9 Day 1	10
11	12 Day 2	13 Day 3	14 Day 4	15 Day 5	16 School In-Service/ Admin Day - No Classes Day 6	17
18	19 Day 1	20 Day 2	21 Day 3	22 Day 4	23 Day 5	24
25	26 Day 6	27 Day 1	28 Day 2	29 Day 3	30 Day 4	

Sunday	Monday	Tuesday	Wednesday	Thursday	Friday	Saturday
						1
2	3 Day 5	4 Day 6	5 Day 1	6 Day 2	7 Day 3	8
9	10 Day 4	11 Day 5	12 Day 6	13 Day 1	14 Day 2	15
16	17 Day 3	18 Day 4	19 Day 5	20 Day 6	21 Day 1	22
23	24 Victoria Day - No Classes	25 Day 2	26 Day 3	27 Day 4	28 Day 5	29
30	31 Day 6					

Sunday	Monday	Tuesday	Wednesday	Thursday	Friday	Saturday
		1 Day 1	2 Day 2	3 Day 3	4 Day 4	5
6	7 Day 5	8 Day 6	9 Day 1	10 Day 2	11 Day 3	12
13	14 Day 4	15 Day 5	16 Day 6	17 Day 1	18 Day 2	19
20	21 Day 3	22 Day 4	23 Day 5	24 Day 6	25 Day 1	26
27	28 Day 2	29 Last Day of Classes Day 3	30 Administration Day No Classes Day 4			

*Please note that there could be slight changes to this calendar. In December, there will be a Christmas Concert Rehearsal & performance in December that could alter a day or two. Also, there will be a class field trip in June that everyone will attend, so that will affect a day in June.

Morris School 2020/2021 Cohort Calendar

Yellow: Grade 9/10 White: Grade 11/12 Pink: No Classes

SEPTEMBER 2020	Sunday	Monday	Tuesday	Wednesday	Thursday	Friday	Saturday
			1	2 Administration Day No Classes Day 1	3 In School PD Day No Classes Day 2	4 In School PD Day No Classes Day 3	5
	6	7 No Classes Labour Day	8 Day 4	9 Day 5	10 Day 6	11 Day 1	12
	13	14 Day 2	15 Day 3	16 Day 4	17 Day 5	18 Day 6	19
	20	21 Day 1	22 Day 2	23 Day 3	24 Day 4	25 Day 5	26
	27	28 Day 6	29 Day 1	30 Day 2			

OCTOBER 2020	Sunday	Monday	Tuesday	Wednesday	Thursday	Friday	Saturday
					1 Day 3	2 Day 4	3
	4	5 Day 5	6 Day 6	7 Day 1	8 Day 2	9 Day 3	10
	11	12 No Classes Thanksgiving	13 Day 4	14 Day 5	15 Day 6	16 Day 1	17
	18	19 Day 2	20 Day 3	21 Day 4	22 Day 5	23 MTS PD Day No Classes Day 6	24
	25	26 Day 1	27 Day 2	28 Day 3	29 Day 4	30 Day 5	31

NOVEMBER 2020	Sunday	Monday	Tuesday	Wednesday	Thursday	Friday	Saturday
	1	2 Day 6	3 Day 1	4 Day 2	5 Day 3	6 School In-Service/ Admin Day - No Classes Day 4	7
	8	9 Day 5	10 Day 6	11 No Classes Remembrance Day	12 Day 1	13 Day 2	14
	15	16 Day 3	17 Day 4	18 Day 5	19 Day 6	20 School In-Service/ Admin Day - No Classes Day 1	21
	22	23 Day 2	24 Day 3	25 Day 4	26 Day 5	27 Day 6	28
	29	30 Day 1					

DECEMBER 2020	Sunday	Monday	Tuesday	Wednesday	Thursday	Friday	Saturday
			1 Day 2	2 Day 3	3 Day 4	4 Day 5	5
	6	7 Day 6	8 Day 1	9 Day 2	10 Day 3	11 Day 4	12
	13	14 Day 5	15 Day 6	16 Day 1	17 Day 2	18 Last Day of Classes Day 3	19
	20	21 Winter Break	22 Winter Break	23 Winter Break	24 Winter Break	25 Winter Break	26
	27	28 Winter Break	29 Winter Break	30 Winter Break	31 Winter Break		

JANUARY 2021	Sunday	Monday	Tuesday	Wednesday	Thursday	Friday	Saturday
						1 Winter Break	2
	3	4 Classes Resume Day 4	5 Day 5	6 Day 6	7 Day 1	8 Day 2	9
	10	11 Day 3	12 Day 4	13 Day 5	14 Day 6	15 Day 1	16
	17	18 Day 2	19 Day 3	20 Day 4	21 Day 5	22 Day 6	23
	24	25 Day 1	26 Day 2	27 Day 3	28 Day 4	29 Day 5	29
30							

FEBRUARY 2021	Sunday	Monday	Tuesday	Wednesday	Thursday	Friday	Saturday
		1 Day 6	2 Day 1	3 Day 2	4 Day 3	5 Day 4	6
	7	8 Semester turn around/ Admin Day - No Classes Day 5	9 Day 6	10 Day 1	11 Day 2	12 Day 3	13
	14	15 Louis Riel Day No Classes	16 Day 4	17 Day 5	18 Day 6	19 Day 1	20
	21	22 Day 2	23 Day 3	24 Day 4	25 Day 5	26 Day 6	27
	28						

MARCH 2021	Sunday	Monday	Tuesday	Wednesday	Thursday	Friday	Saturday
		1 Day 1	2 Day 2	3 Day 3	4 Day 4	5 Day 5	6
	7	8 Day 6	9 Day 1	10 Day 2	11 Day 3	12 Day 4	13
	14	15 Day 5	16 Day 6	17 Day 1	18 Day 2	19 School In-Service/ Admin Day - No Classes Day 3	20
	23	24 Day 4	25 Day 5	24 Day 6	25 Day 1	26 Last Day of Classes Day 2	27
	28	29 Spring Break	30 Spring Break	31 Spring Break			

APRIL 2021	Sunday	Monday	Tuesday	Wednesday	Thursday	Friday	Saturday
					1 Spring Break	2 Spring Break	3
	4	5 Classes Resume Day 3	6 Day 4	7 Day 5	8 Day 6	9 Day 1	10
	11	12 Day 2	13 Day 3	14 Day 4	15 Day 5	16 School In-Service/ Admin Day - No Classes Day 6	17
	18	19 Day 1	20 Day 2	21 Day 3	22 Day 4	23 Day 5	24
	25	26 Day 6	27 Day 1	28 Day 2	29 Day 3	30 Day 4	

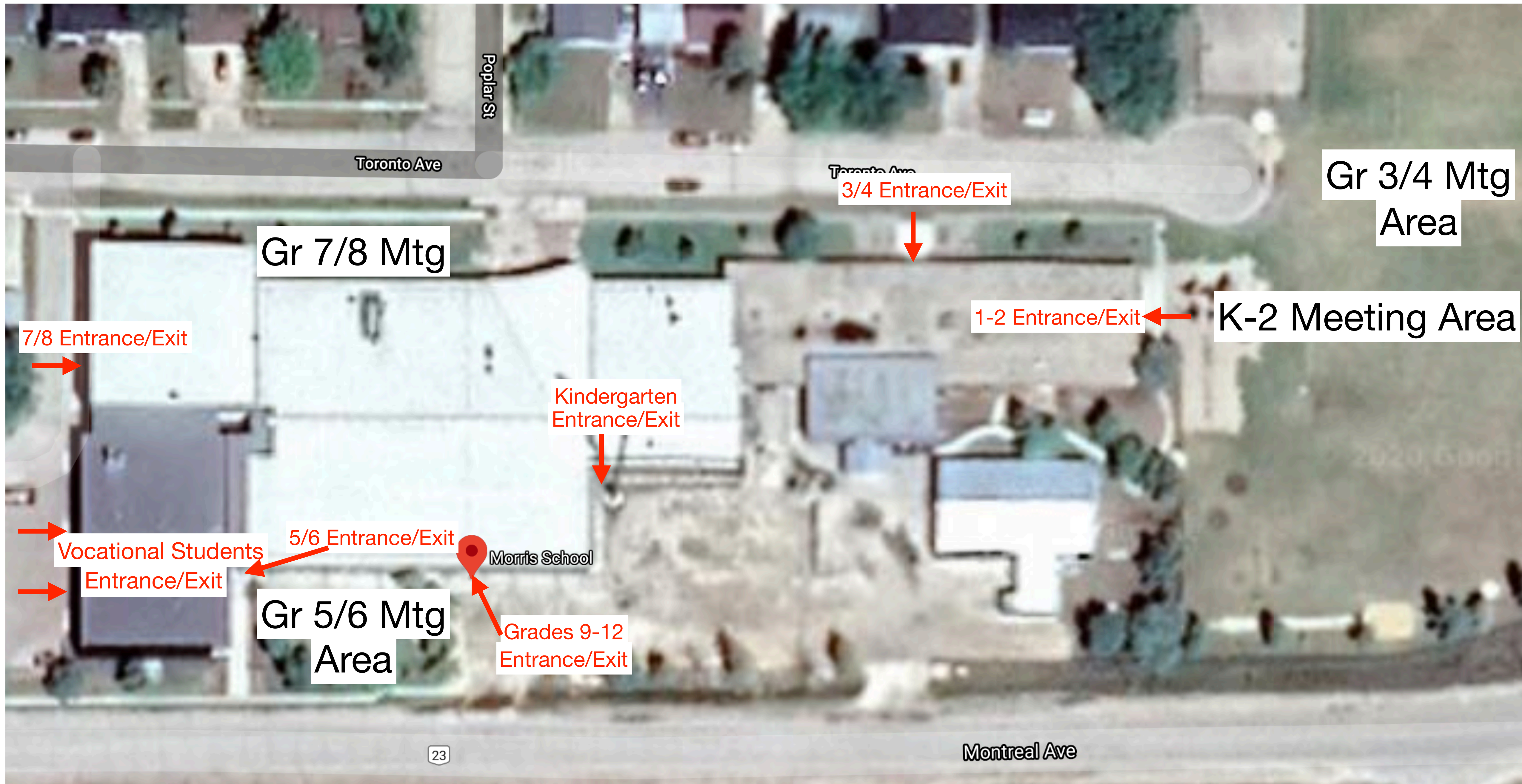
MAY 2021	Sunday	Monday	Tuesday	Wednesday	Thursday	Friday	Saturday
							1
	2	3 Day 5	4 Day 6	5 Day 1	6 Day 2	7 Day 3	8
	9	10 Day 4	11 Day 5	12 Day 6	13 Day 1	14 Day 2	15
	16	17 Day 3	18 Day 4	19 Day 5	20 Day 6	21 Day 1	22
	23	24 Victoria Day - No Classes	25 Day 2	26 Day 3	27 Day 4	28 Day 5	29
30	31 Day 6						

JUNE 2021	Sunday	Monday	Tuesday	Wednesday	Thursday	Friday	Saturday
			1 Day 1	2 Day 2	3 Day 3	4 Day 4	5
	6	7 Day 5	8 Day 6	9 Day 1	10 Day 2	11 Day 3	12
	13	14 Day 4	15 Day 5	16 Day 6	17 Day 1	18 Day 2	19
	20	21 Day 3	22 Day 4	23 Day 5	24 Day 6	25 Day 1	26
	27	28 Day 2	29 Last Day of Classes Day 3	30 Administration Day No Classes Day 4			

*Please note that there could be slight changes to this calendar**

	Grades K-2	Grades 3-4	Grades 5-6	Grades 7-8	Grades 9-10	Grade 11	Grade 12
Pooling Location	Play Struture	Gaga Ball Pit	Outdoor Classroom	Front of School	NA	NA	NA
Entrance/Exit Door	1's & 2's - East Playground K's - door closest to the classroom	EY North Doors	Southwest Doors	West Gym Doors	Theatre Door	Theatre Door	Theatre Door
Washroom Location	EY Girls'	EY Boys'	MY Washrooms	SY Gym	SY Washrooms	SY Washrooms	SY Washrooms
Entry Time	8:35	8:40	8:35	8:35	8:35	8:35	8:35
School Starts	8:45	8:50	8:45	8:45	8:45	8:45	8:45
AM Recess	10:20	10:40	10:00	NA	NA	NA	NA
Lunch (Eat)	11:30	Noon	Noon	Noon	Noon	Noon	Noon
Lunch Location	Classrooms	Classrooms & Jr Gym	Classrooms	SY Gym	Theatre & Classroom	See 9-10's	See 9-10's
Lunch (Recess)	Noon	12:30	11:30	NA	NA	NA	NA
PM Recess	1:45	2:25	2:05	NA	NA	NA	NA
Exit Time	3:10	3:15	3:20	3:20	3:20	3:20	3:20

Appendix C: Cohort Meeting Points AND Entrance/Exit Doors



Grade 9/10 Days

Period 1				
Course	Teacher	Location	# of students	Max Capacity
Trans Math	Ricard	Sci Lab	13	18
9 ELA	Lopez	Art Room	16	18
10 Phys. Ed	Lucier	29/33	10	30
10 PCAM	T. Dekezel	Theatre	19	40
Period 2				
Trans Math	Ricard	Art Room	16	18
9 ELA	Lopez	Sci Lab	13	18
10 ELA	Wray	Theatre	18	40
10 Geography	Berezowski	29/33	15	30
Period 3				
9 Art	Wray	Art Room	17	18
9/10 GCT	Lopez	Computer Lab	11	25
9 Spare	Berezowski	Theatre	32	40
10 Spare	D. Dekezel	Library	7	30
Period 4				
9 Science	T. Dekezel	Sci Lab	11	18
9/10 Hockey Academy	Lewis	Multiplex/Outside	11	NA
9 Spanish	Clayton	29/33	16	30
10 Art	Wray	Art Room	17	18
Gr 6 Band	Demond	Theatre	29	40
Period 5				
9 Social Studies	Stevenson	29/33	19	30
9 Phys. Ed./Health	Lucier	Art Room	11	18
10 Science	Cory	Sci Lab	12	18
10 Digital Pics	Ricard	Theatre	15	40

Grade 11/12 Days

Period 1				
Course	Teacher	Location	# of students	Max Capacity
Grade 11 History	Berezowski	Theatre	26	40
Grade 12 Bio	Cox	29/33	26	30
Grade 12 ELA Tr	Clayton	MPR	25	28
Period 2				
11 ELA	Clayton	29/33	21	30
11 Bio	T. Dekezel	Sci Lab	18	18
12 Geography	Lehmann	Theatre	24	40
Period 3				
11/12 Physics	Cox	Sci Lab	12	18
11 Spare		Theatre	39	40
12 Spare	Berezowski	29/33	30	30
12 Spare	D. Dekezel	Library	25	25
Period 4				
11 PE Spare	Ricard	Theatre	20	40
11 Chemistry	Cox	Sci Lab	12	18
12 PE Spare	Lucier	29/33	27	30
12 Law	Lehmann	Art Room	18	18
11 Hockey Academy	Lewis	Multiplex/Outside	4	NA
Gr 5 Music	Demond	MPR	17	28
Period 5				
11 Essential Math	Lopez	Art Room	18	18
11 Pre-Cal Math	Cox	Theatre	23	40
12 ELA Lit	Clayton	Sci Lab	16	18
12 Essential Math	Leflar	29/33	22	30